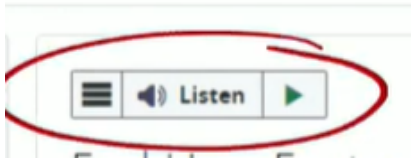


ReadSpeaker Student Guide

Version 1

Using the WebReader within Moodle

ReadSpeaker for Moodle is a text-to-speech tool that allows learners to have text read to them. The button appears at the top of each page within Moodle. It can easily be activated by clicking the Listen button.

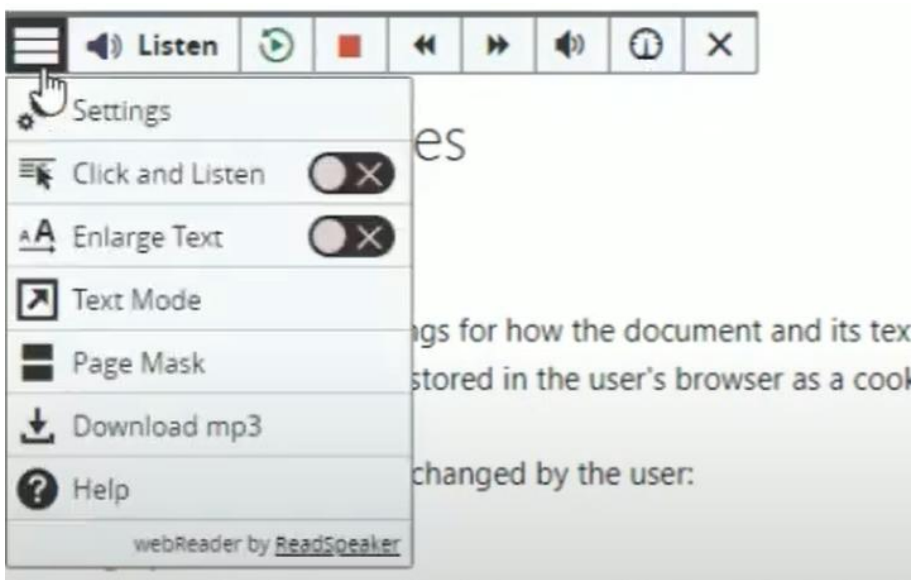


The tool allows for synchronized highlighting as the voice reads the text.

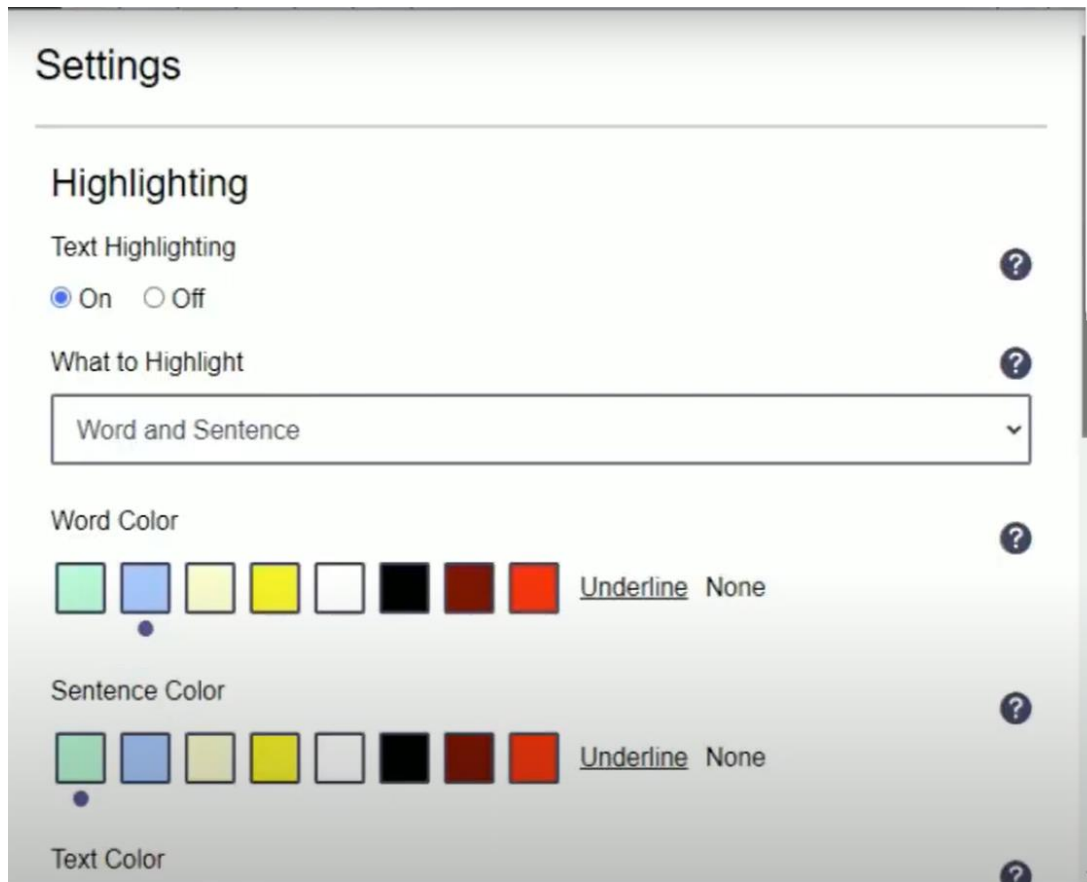


Students can change the settings for how the document and text should be displayed and read. When students make changes, the settings are stored in the user's browser as a cookie. **If cookies are cleared on a device, the ReadSpeaker settings will default back to the original settings.**

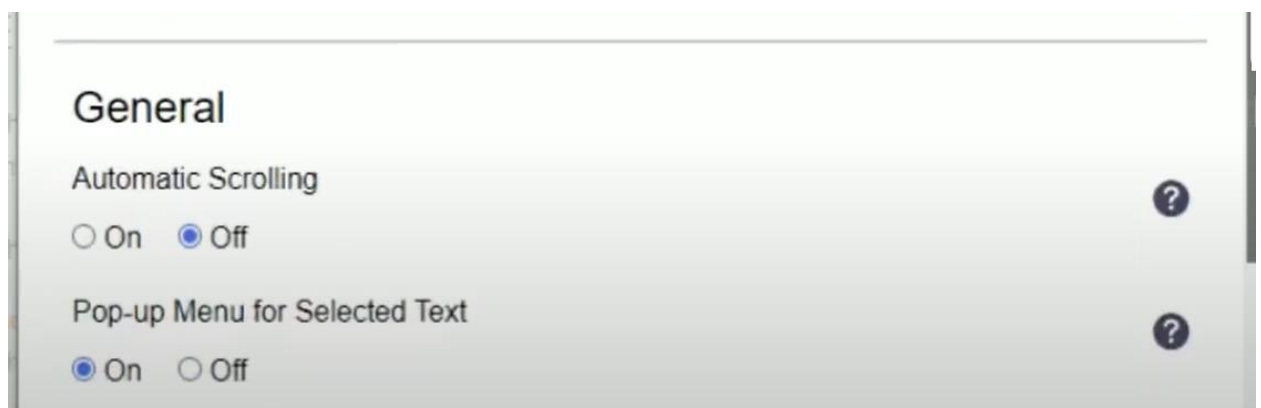
By expanding the three-lined bar, users have the option to skip forward, backward, adjust the volume, and adjust the reading speed.



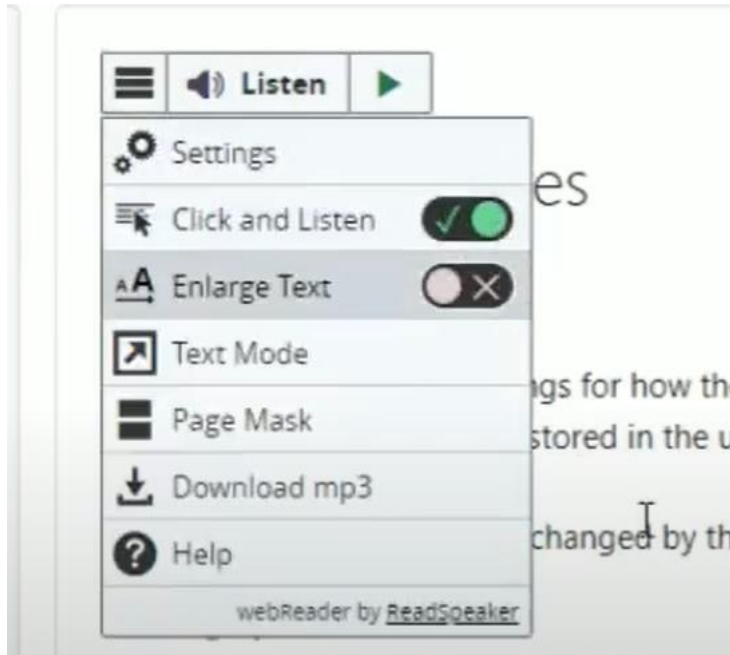
If the user selects the three bars and clicks on **Settings**, a variety of settings can be changed.



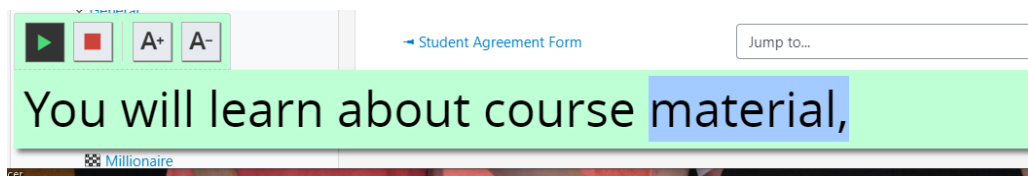
Students can choose to highlight words, sentences, or both. There is an option to set the highlighting colors, and text colors. Students can also turn automatic scrolling on or off by selecting the corresponding bubble.



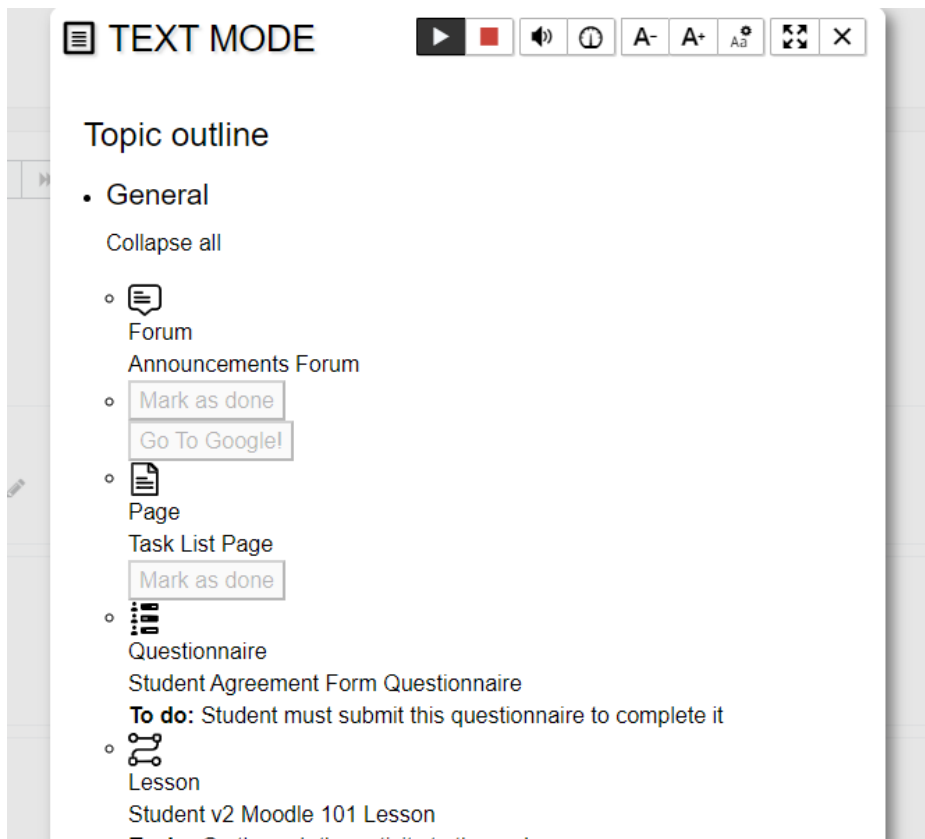
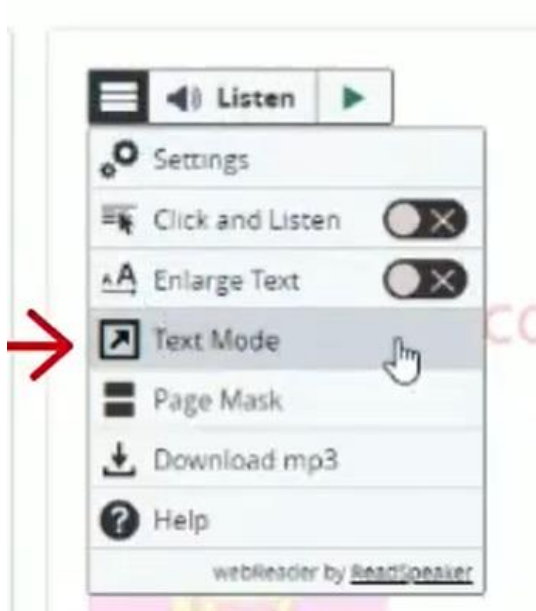
Turning on **Click and Listen** enables students to click within the text and the text is read automatically.



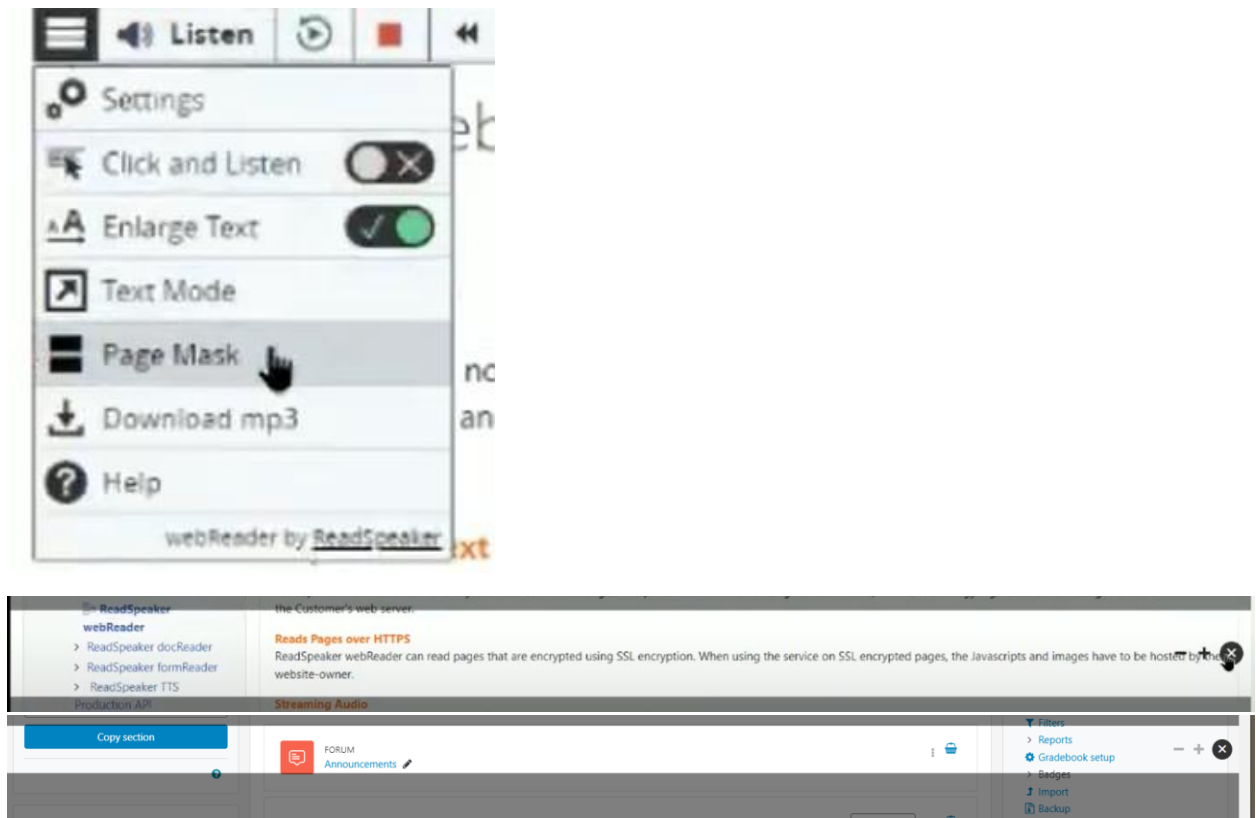
Turning on **Enlarge Text** makes the text larger and is displayed at the bottom of the page making it easier to concentrate on short phrases. Clicking on the A+ and A-, makes the font larger and smaller.



Turning on **Text Mode** allows users to see a clutter-free version of the text in their preferred font and color.

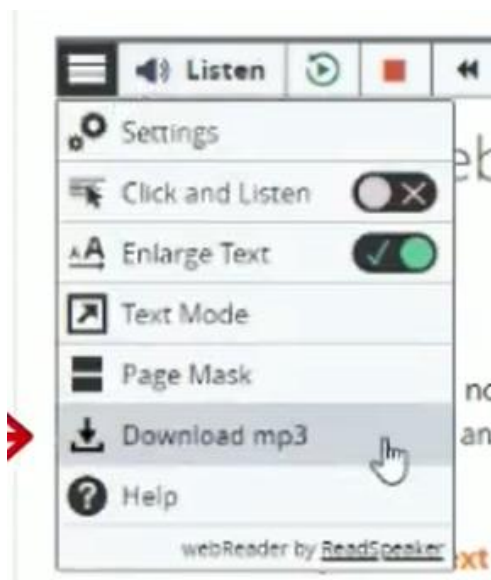


Page Mask displays a horizontal bar that highlights the text being read and shades the rest of the page.

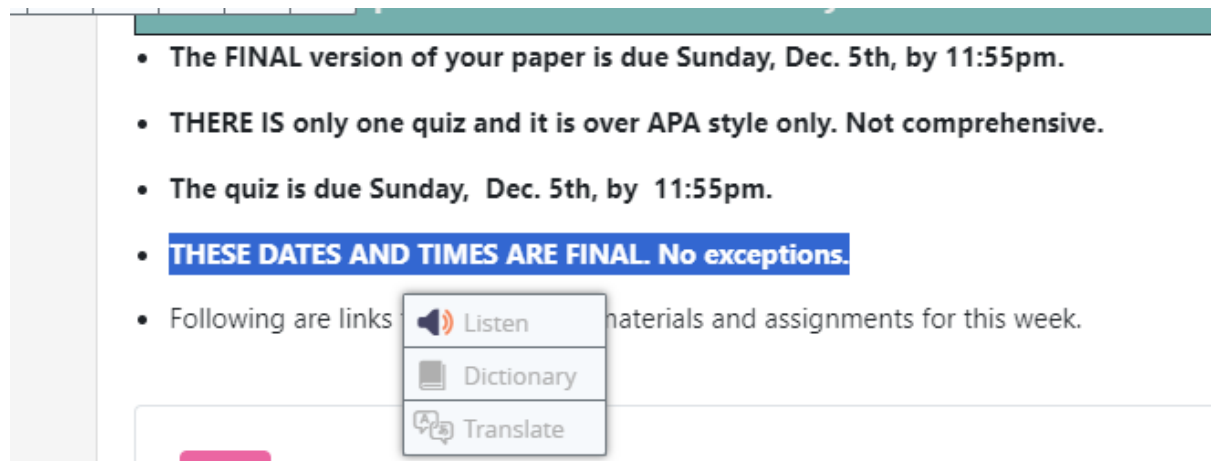


The horizontal bar moves with the page, and the + and – on the far right will allow the bar to be made larger or smaller.

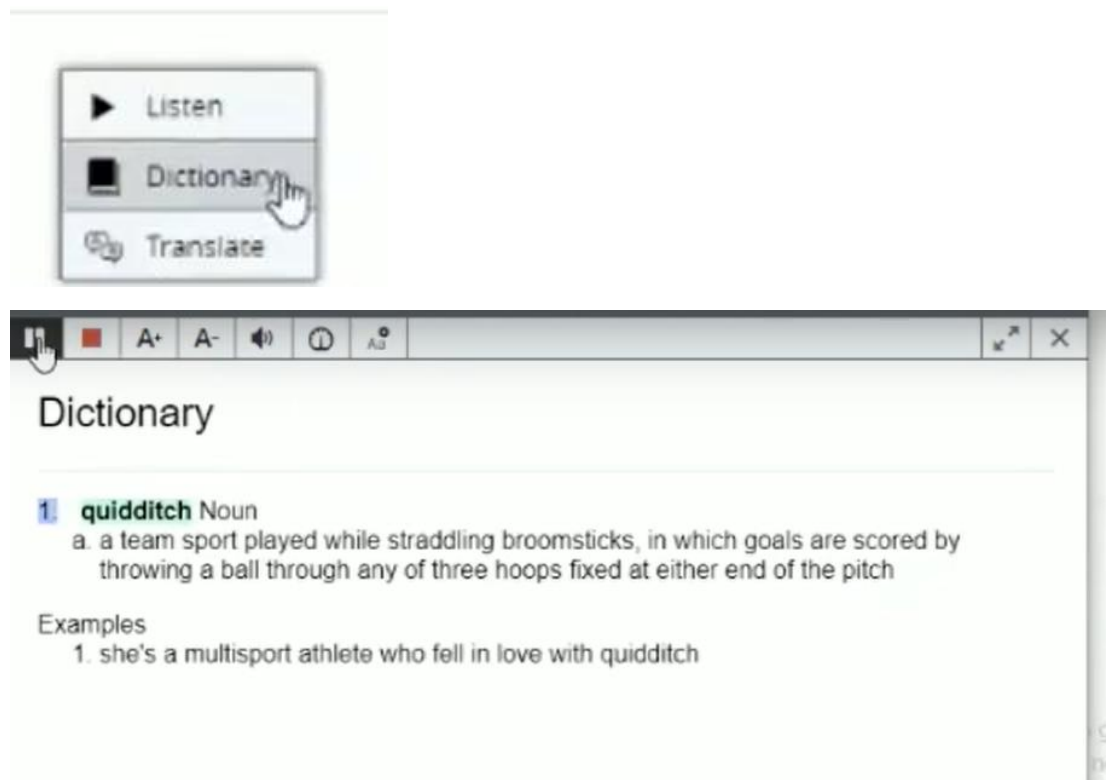
Download mp3 allows the student to download a version of the text for offline listening.



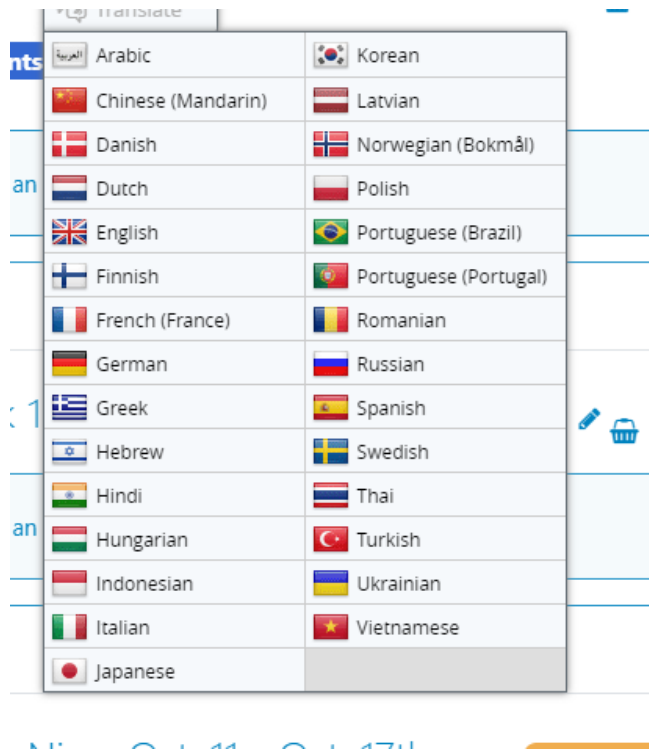
When highlighting text and clicking **Listen**, the selected text will be read.



Highlighting a word and selecting **Dictionary** will bring up the definition of the highlighted word.

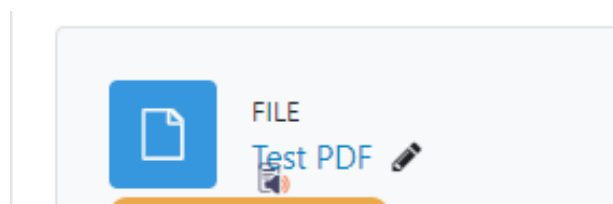


Selecting **Translate** will translate the word into a different selected language



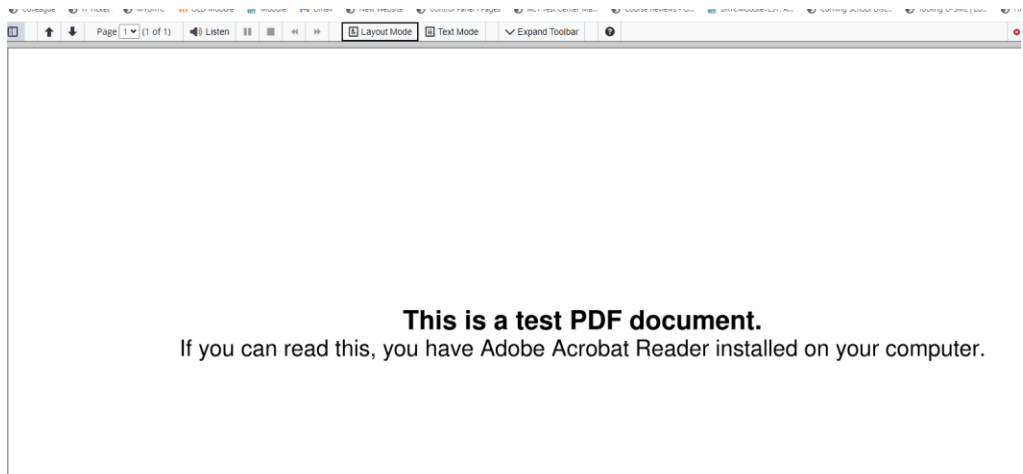
Reading Documents with ReadSpeaker

NOTE: ReadSpeaker only works for content **WITHIN** Moodle.



A readable document will have a little speaker under the file name. Students have the open to click on the speaker to bring up the document reader. **If there is NO speaker present, the document is not readable.** **NOTE:** ReadSpeaker only works for content **WITHIN** Moodle.

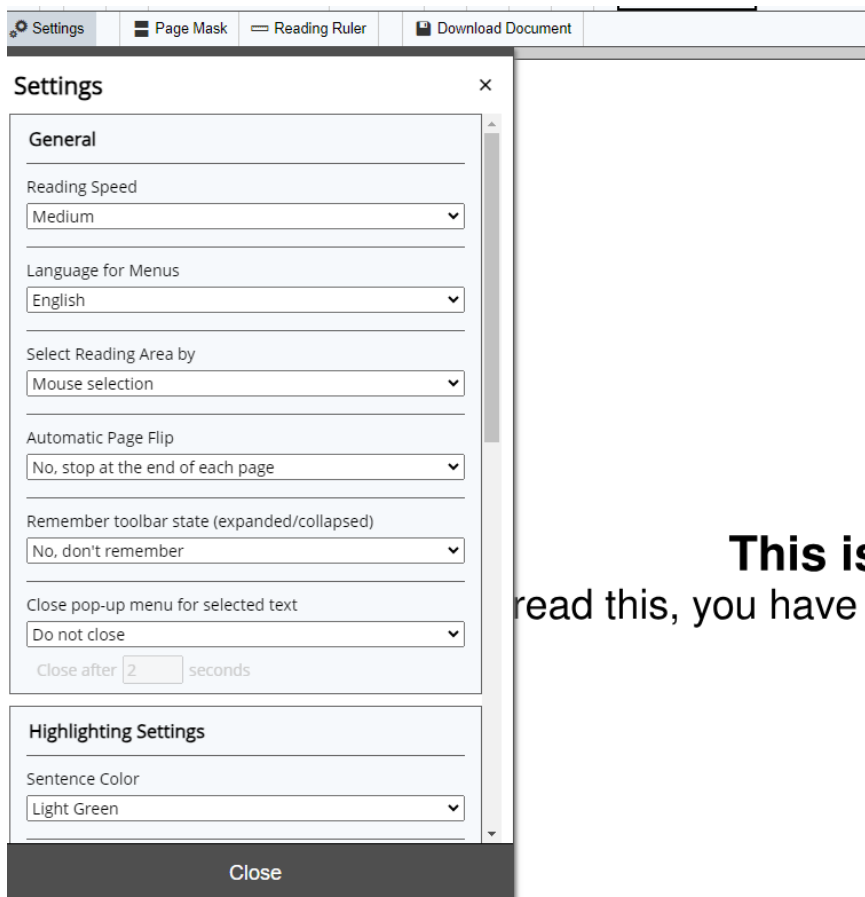
Once you click the speaker, the PDF doc reader opens up.



To read the document, click the **Listen** button on the toolbar.



To change the settings, click the expand toolbar on the far right of the toolbar. This will bring up the same settings as the webReader. Each user can change settings to meet their own needs and preferences.



This is
read this, you have ,

For any questions, contact the Distance Education Department in AD 133 or email at online@blackrivertech.edu